

GPM Life Portraits Desktop Software download

Log in to GPM Agent Access <https://www.gpmagent.com> using your user name and password

Approximately halfway down the web page is the “Marketing, Forms, Resources & Software” section
Click on “GPM Illustration – Life Portraits Web Version”

Marketing Forms, Resources & Software

GPM Illustration - Life Portraits Web Version	GPM Illustration
GPM Software DOWNLOADS	GPM Software
Quotes On The Go	QOTG-0618
My Personal Medication Record Card	PMRCard
Confidential Fact-Finder - Family & Retirement	54.60
Rates and Procedures Manual	Rates Proc
Traditional Product Interest Rates	.

VERY IMPORTANT!!!

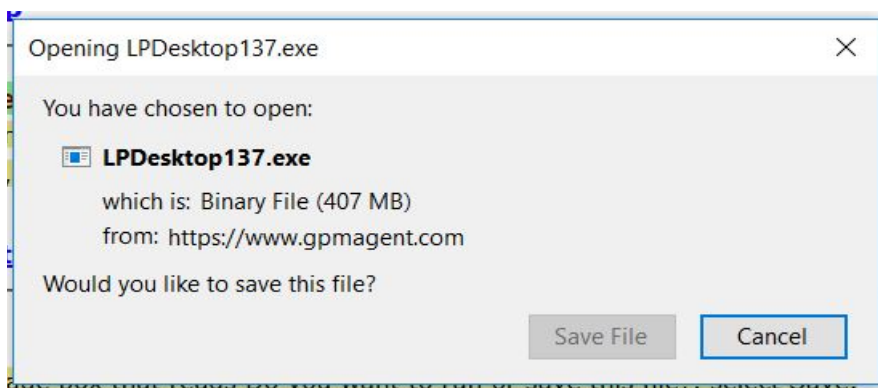
MAKE SURE YOU TURN OFF YOUR FIREWALL BEFORE BEGINNING INSTALLATION!!

Download the “Insurance Desktop” software

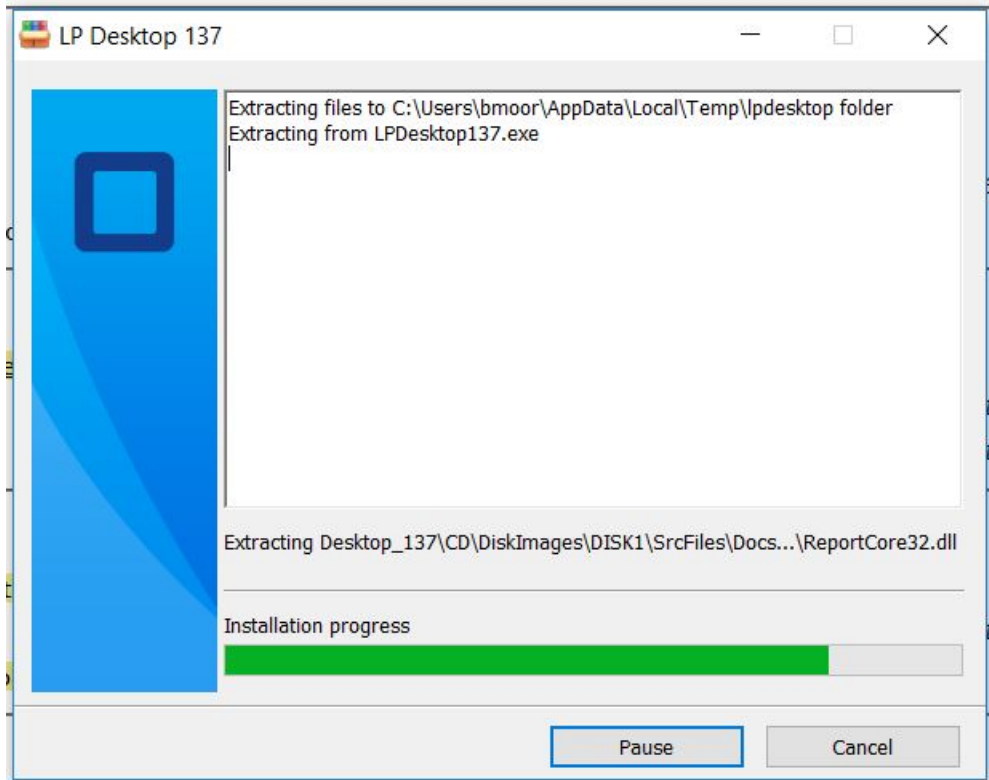
GPM Agent Access - Software Downloads

Description	Date Released	Size (MB)	Program Version	Data Version
LP Illustration & Quote Desktop Insurance Desktop	August 31, 2018	384	137	2018.08.31
GPM FERS-CSRS Benefits Please turn off your anti-virus software temporarily while installing. For registration codes, please call Sales Support at 800 938-4765, x4003 Version 4.15.3 CBPO Documentation Read this for CBPO and FEGLI override instructions	January 01, 2019	66.7	4.15.3	2019.01.01

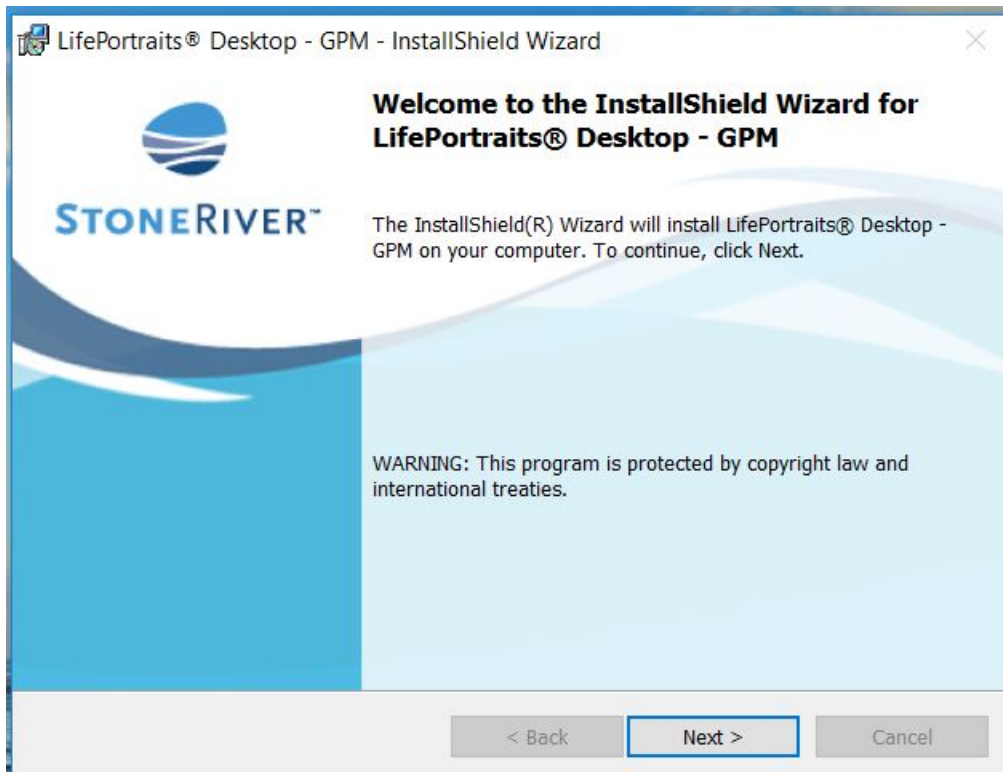
When prompted – choose “Save File”



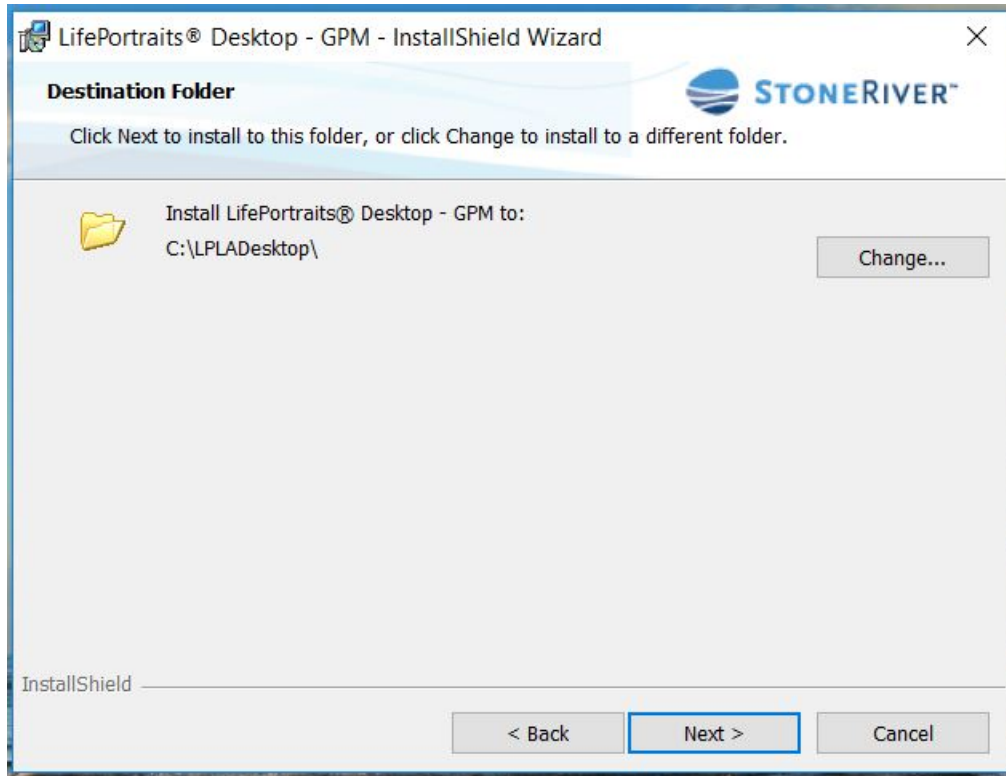
Open the downloaded file and the installation wizard should begin.



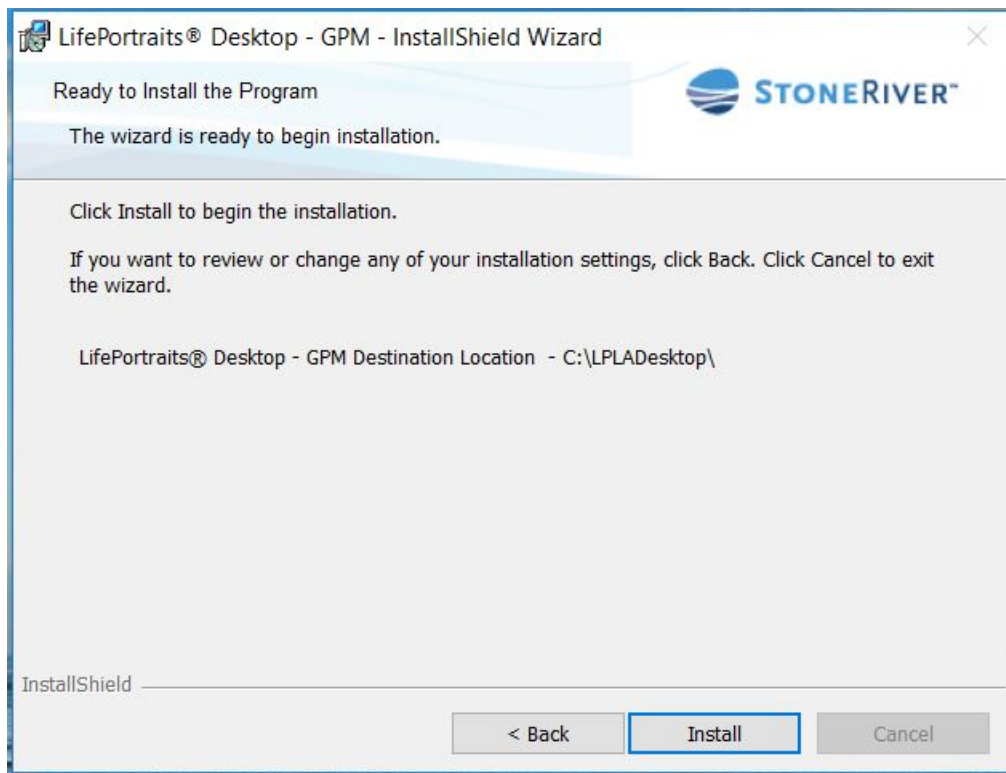
Click "Next" to continue with installation.



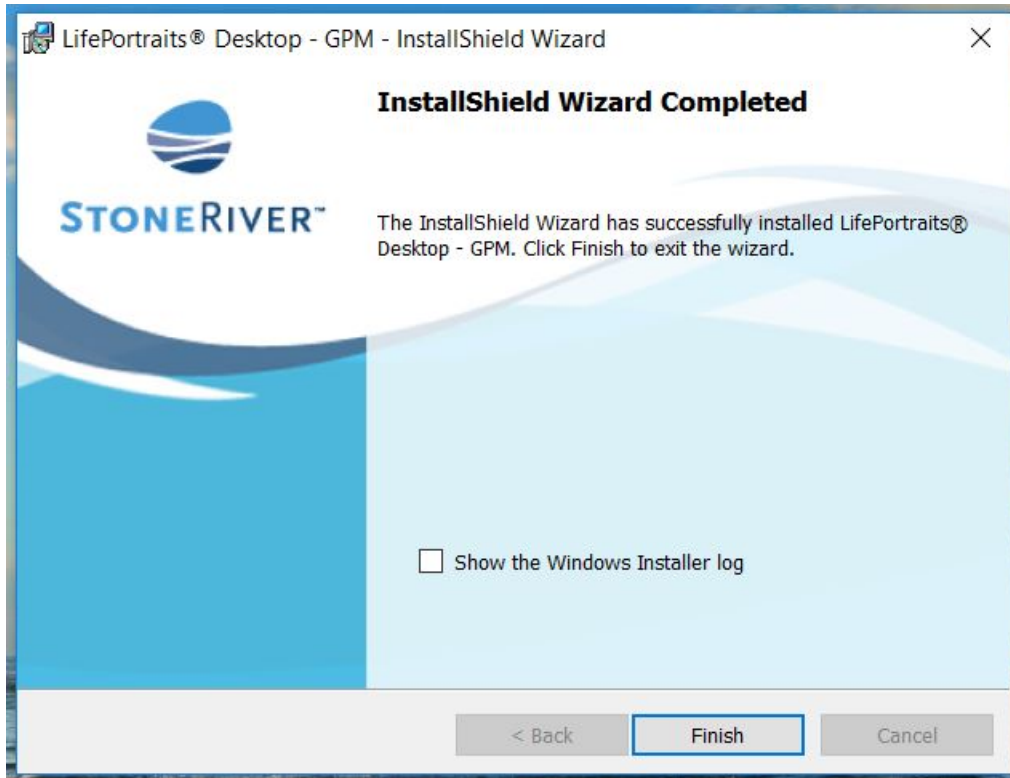
Click "Next" to tell the wizard where to install the software – WE RECOMMEND YOU DO NOT CHANGE THE DESTINATION FOLDER



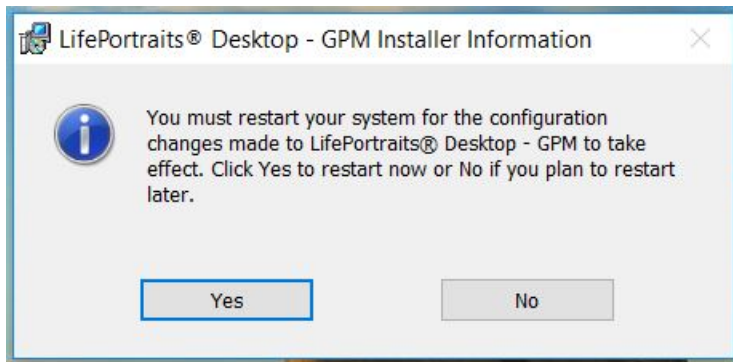
Click "Install" to begin the installation



Click "Finish" to finalize the installation.



When prompted, restart your computer to complete the installation.



After your computer restarts, you will see two icons added to your Desktop as shown below:



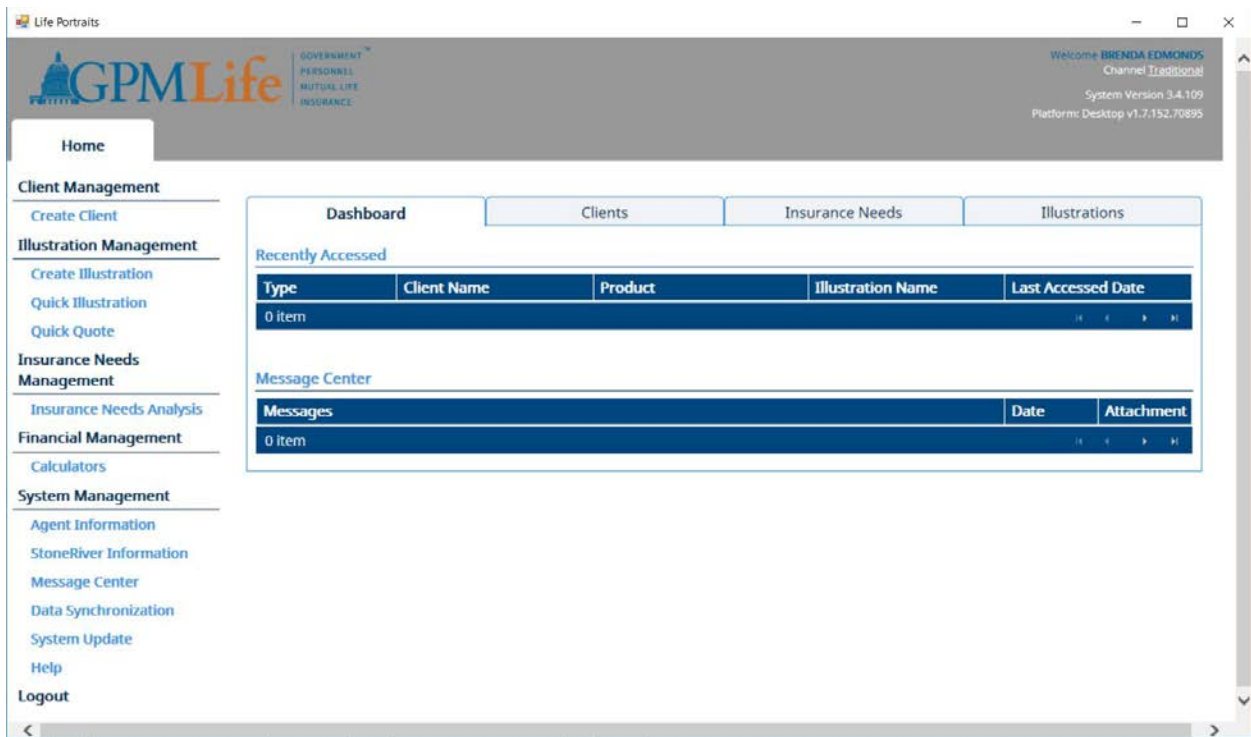
Double Click on the "Life Portraits Desktop System – GPM" icon to open the desktop illustration software. When prompted, click "yes" to allow Lifeportraits.Desktop.exe to make changes to your computer.

You should see the Life Portraits login screen. Enter your User Name and Password that you would use to log into the GPM Agent Access website.



The screenshot shows a login window titled "Life Portraits". It contains a form with two input fields: "User Name:" and "Password:". Below the fields is a "Login" button. The window has standard Windows-style title bar controls (minimize, maximize, close).

After you successfully enter your User Name and Password, you should see the main dashboard of the Life Portraits Illustration Software.



The screenshot displays the main dashboard of the Life Portraits Illustration Software. The top header includes the GPM Life logo, the text "GOVERNMENT PERSONNEL MUTUAL LIFE INSURANCE", and a welcome message for "BRENDA EDMONDS" with "Channel TradSocial" and "System Version 3.4.109 Platform: Desktop v1.7.152.70895". The left navigation menu is organized into sections: Home, Client Management (Create Client), Illustration Management (Create Illustration, Quick Illustration, Quick Quote), Insurance Needs Management (Insurance Needs Analysis), Financial Management (Calculators), and System Management (Agent Information, StoneRiver Information, Message Center, Data Synchronization, System Update, Help, Logout). A red arrow points to the "Agent Information" link. The main content area has tabs for "Dashboard", "Clients", "Insurance Needs", and "Illustrations". The "Dashboard" tab is active, showing a "Recently Accessed" table with columns for Type, Client Name, Product, Illustration Name, and Last Accessed Date, and a "Message Center" table with columns for Messages, Date, and Attachment. Both tables show "0 item".

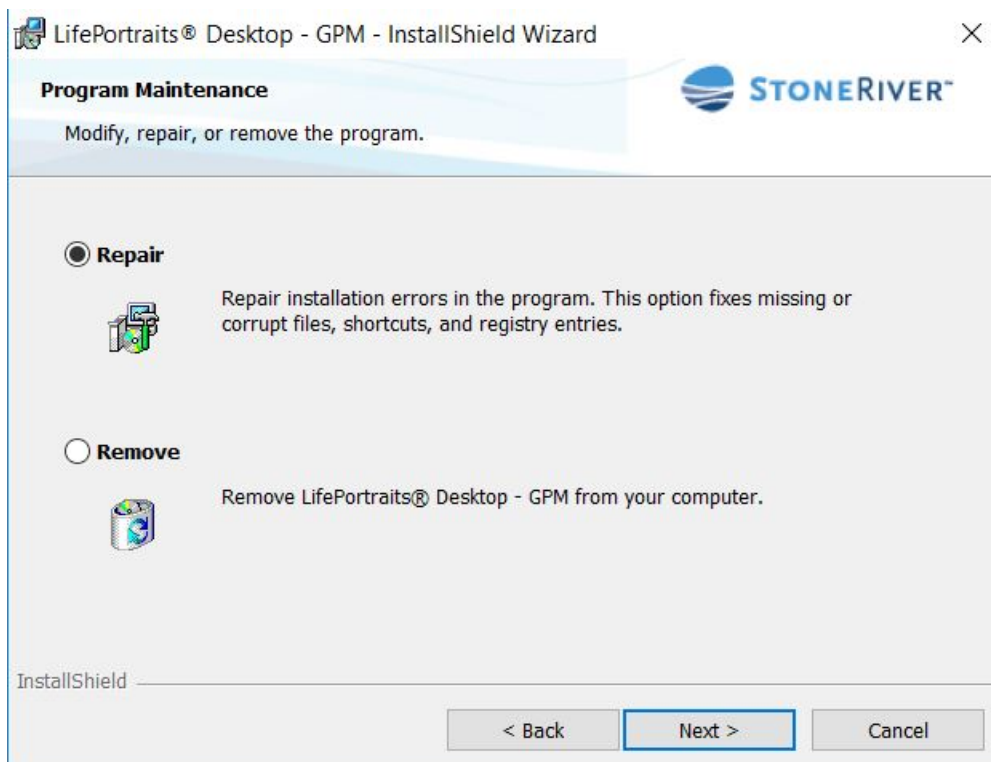
You can now enter your agent information and run illustrations.

The next page contains some helpful hints.

HELPFUL HINTS FOR INSTALLATION

MAKE SURE YOU **TURN OFF** YOUR FIREWALL BEFORE BEGINNING INSTALLATION!!

If you get an ERROR when you should see the Login screen – open the downloaded installation file again and click “Next” and you should see the following screen. Choose “Repair” and click “Next” to repair your installation.



If you have any installation issues, send a **TEXT to 877.331.9747** – include your name, agent # and a statement of your issue. This is the best way to get a response quickly. This allows them to determine whether you need to have a trouble ticket placed so that Stone River can call you back to resolve your issue. You can call GPM but you will generally only get voicemail and may wait quite some time for a call back. The text support number is monitored daily, including weekends.